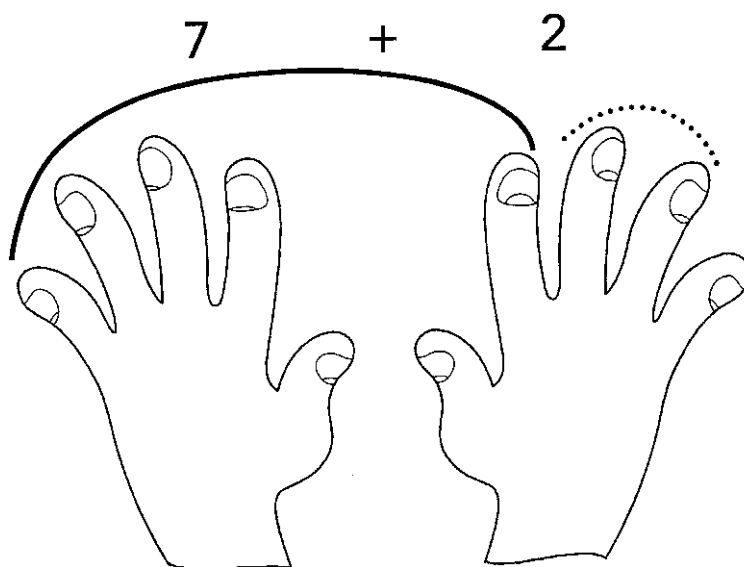


MANI PER CONTARE

UTILIZZA LE DITA DELLE MANI PER ESEGUIRE LE ADDIZIONI. PROVA COSÌ:

$$7 + 2 = 9$$



CONTINUA TU CONTANDO CON LE DITA.

$4 + 3 = \dots\dots\dots$

$8 + 0 = \dots\dots\dots$

$5 + 2 = \dots\dots\dots$

$1 + 5 = \dots\dots\dots$

$6 + 1 = \dots\dots\dots$

$2 + 4 = \dots\dots\dots$

$3 + 3 = \dots\dots\dots$

$4 + 4 = \dots\dots\dots$

$1 + 1 = \dots\dots\dots$

$2 + 6 = \dots\dots\dots$

$6 + 2 = \dots\dots\dots$

$3 + 6 = \dots\dots\dots$

$1 + 7 = \dots\dots\dots$

$3 + 5 = \dots\dots\dots$

$2 + 2 = \dots\dots\dots$

$1 + 3 = \dots\dots\dots$

$0 + 5 = \dots\dots\dots$

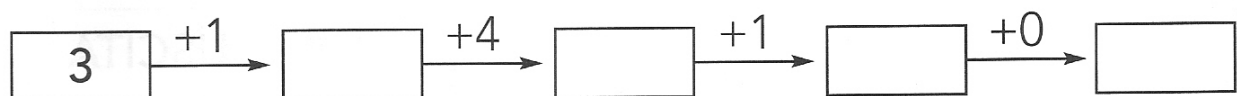
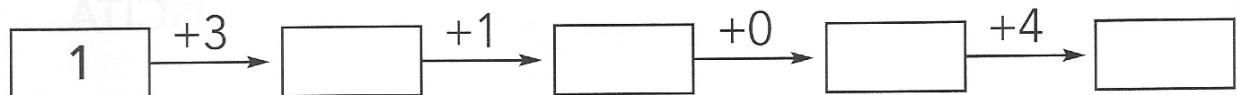
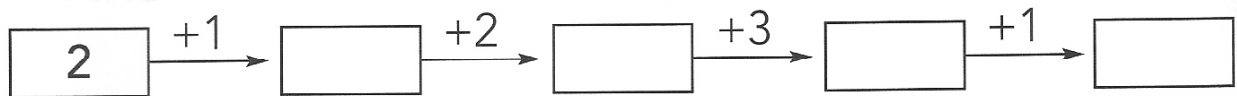
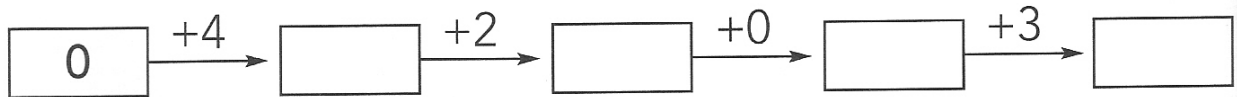
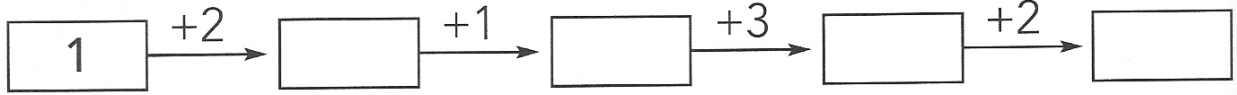
$5 + 4 = \dots\dots\dots$

$3 + 4 = \dots\dots\dots$

$7 + 0 = \dots\dots\dots$

LE MACCHINE DEI NUMERI

COMPLETA LE CATENE:



COMPLETA LE TABELLE:

$\xrightarrow{+2}$

5	
6	
4	
3	
2	
1	

$\xrightarrow{+4}$

3	
1	
5	
0	
2	
4	

$\xrightarrow{+3}$

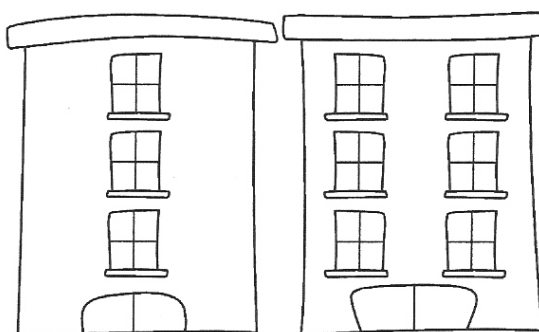
1	
6	
2	
5	
0	
4	

ADESSO SO... OPERARE CON L'ADDIZIONE!

CONTA LE FINESTRE DI OGNI PALAZZO, SCRIVI I
NUMERI SULLA RIGA SOTTO ED ESEGUI LE
ADDIZIONI.



..... + =



..... + =



..... + =



..... + =



..... + =



..... + =